

5AQ001

X10
14



946
946
946

2197
2197
946
946

645
645



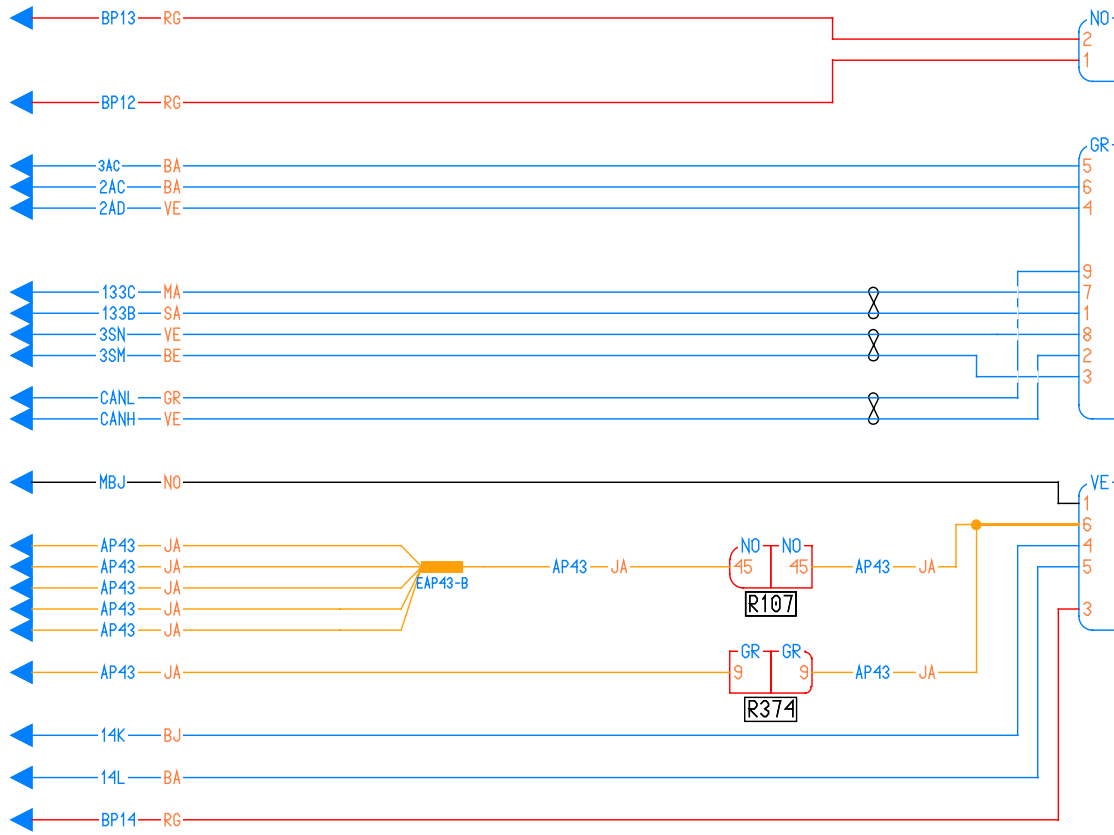
235
1081
129
261
261

1222

212

212

1094



1088
756

227

226
1758

212



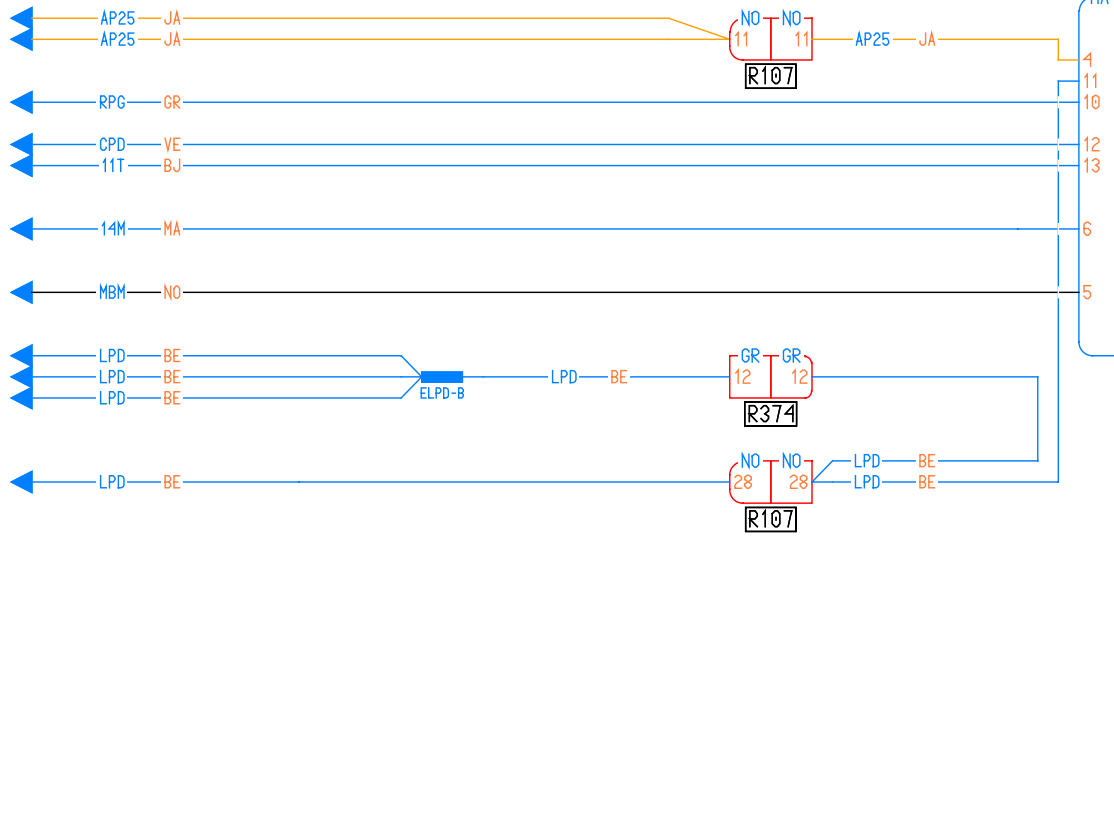
166
167
172

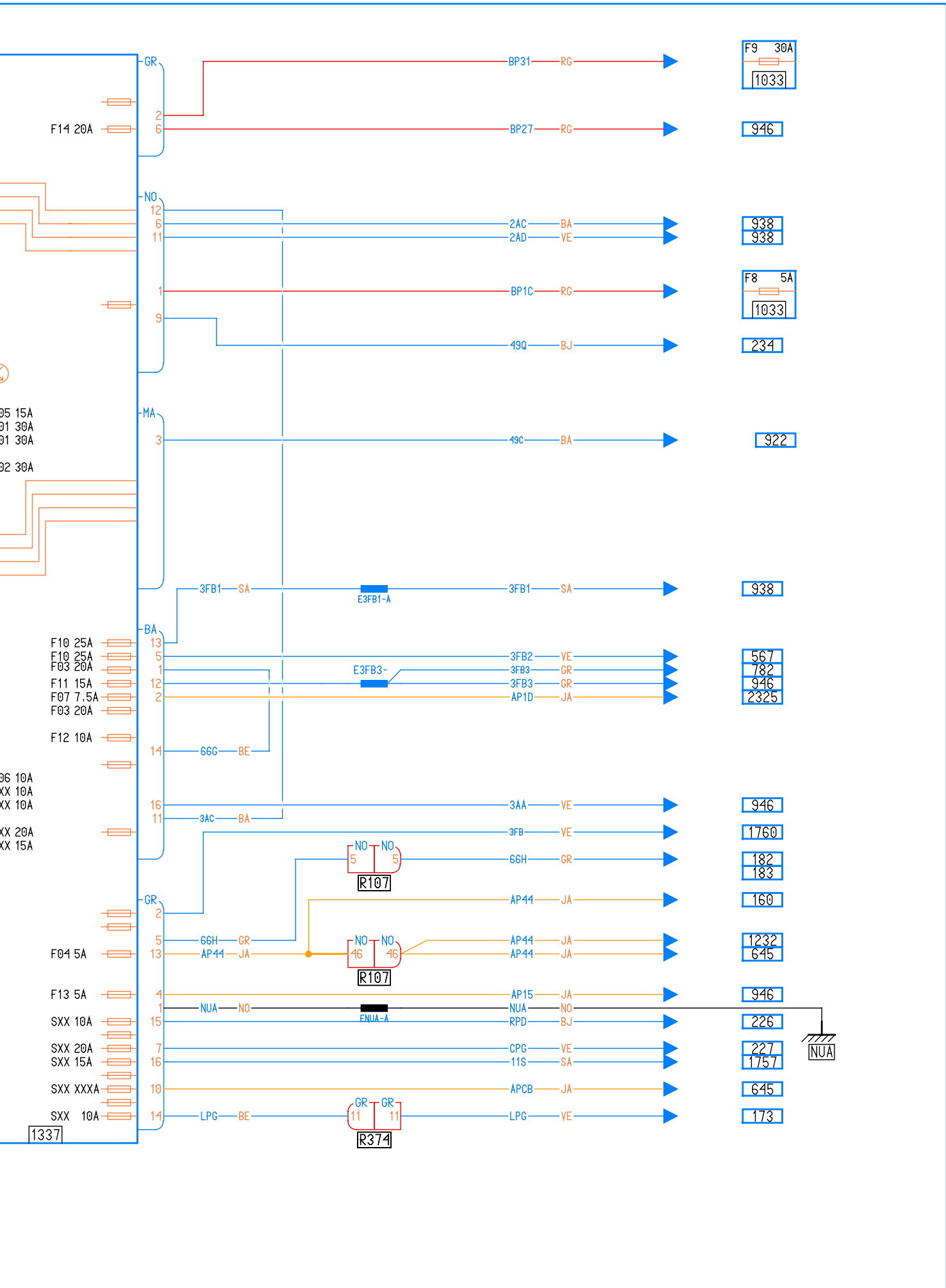
133

123
125
1629
130
1081
261

1390
1936
131
2139

1512
1511
135





F9 30A
1033

946

938
938

F8 5A
1033

234

922

938

567
782
946
2325

946

1760

182
183

160

1232
645

946

226

227
1757

645

173

NUA

NO NO
5 5
R107

NO NO
46 46
R107

GR GR
11 11
R374

1337